

Area Monitoring



375-Series
Area Monitoring System

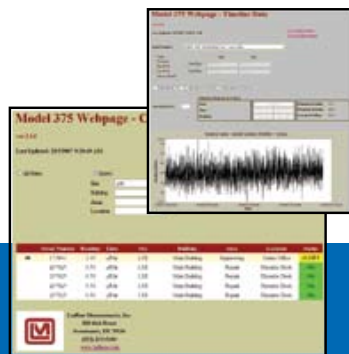
Gamma Area Monitoring Systems

The Model 375 is a versatile, compact and very affordable digital electronic controller designed for monitoring radiation in areas. Its simple design accommodates many different detectors suiting a wide variety of applications and is equipped with a local readout and alarms. These versatile units may also be connected to an optional remote indicator/annunciator for alerting personnel at other locations. The user-friendly, digital design enhances setup and operation. These units may also be networked to a central PC-based station where data are logged and alarms posted.

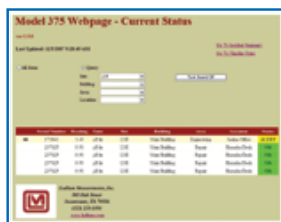
Detector Range	Detector	Model	Part Number
1 μ Sv/hr-10 mSv/hr (0.1 mR/hr-1.0 R/hr)	Energy compensated GM	375/2	48-2410
10 μ Sv/hr-100 mSv/hr (1.0 mR/hr-10 R/hr)	Energy compensated GM	375/4	48-2411
Any 5 consecutive decades between 1 μ Sv/hr-10 Sv/hr (0.1 mR/hr-1.0 kR/hr)	Ion chamber	375/9	48-3036 & 47-3324
1 μ Sv/hr-20 mSv/hr (100 uR/hr-2.0 R/hr)	5.1 x 5.1 cm (2.0 x 2.0 in.) NaI Scintillator with removable shield	375-10	48-3443
	Any external GM, scintillator or proportional detector	375	48-2230 (375 electronics only)

Ethernet Connectivity with a WebPage Interface

Model 375s equipped with the ethernet option can be connected to a radiation network that collects and displays radiation levels and alarm status in real time from up to 50 area monitors. A standard webpage browser with appropriate authorization can view all data across the network and audibly announce any alarms. The system can also be setup to send intelligent email alerts to responsible personnel and capture a picture of whatever triggered an alarm anywhere optional ethernet cameras are employed.



Part Number: 1370-077



Current Status



Incident Summary



Timeline Data

Optional Remote Indicators/Annunciators



271
Indicators

Part Number: 48-2475



272
Indicators/Meter

Part Number: 48-2656



272D
Digital Display

Part Number: 48-3575